



NIPPON KAIJI KYOKAI

Certificate

Certificate No.
TA22465E(R)

OF

APPROVAL

Item : A-30 Class Bulkhead
Product name : SeaRox SL 620 (40/25mm)
Specifications : See Annex.
Applicant : Rockwool International A/S
Hovedgaden 584, DK-2640 Hedehusene, Denmark
Manufacturers : See Annex.
Testing standard : 2010 FTP Code Annex 1 / Part 3
Test Report : See Annex.

THIS IS TO CERTIFY that the above type of products has been approved by Nippon Kaiji Kyokai with type approval No. 17FPA32DA, and that the products of the above type will be accepted for use onboard ships classed with the Society as complying with the relevant requirements of the Society's *Rules for the Survey and Construction of Steel Ships* and those of the *International Convention for the Safety of Life at Sea, 1974, as amended*, subject to conditional upon the manufacturers having a quality control system audited by a competent authority to ensure continuous compliance with the type approval conditions.

This certificate is valid from 28 June 2022 until 27 June 2027.

Issued at Tokyo on 14 July 2022.

NIPPON KAIJI KYOKAI



Y. Takao

General Manager

Material and Equipment Department



1. Manufacturers

Rockwool A/S
Hovedgaden 501, DK-2640 Hedehusene, Denmark

Roxul Rockwool Insulation India Pvt. Ltd.
Plot Z/4, Dahej SEZ, Dahej, District Bharuch 392 130, Gujarat, India

2. Test report

Test laboratory : Danish Institute of Fire and Security Technology
Jernholmen 12, DK-2650 Hvidovre, Denmark

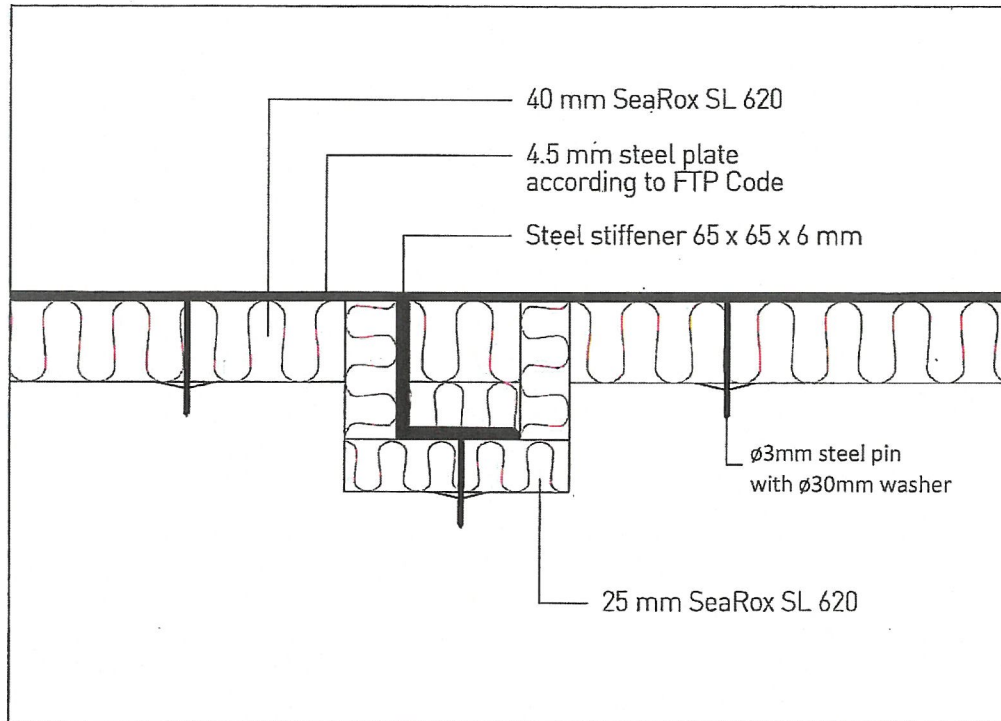
Report number : PGA10944A

Date of issue : 21 December 2016

3. Specifications

Product description

The specified thickness of SeaRox SL620 on the level is minimum 40 mm; density range 100-130 kg/m³ and the specified thickness of SeaRox SL620 on the stiffeners is minimum 25 mm; density range 100-130 kg/m³



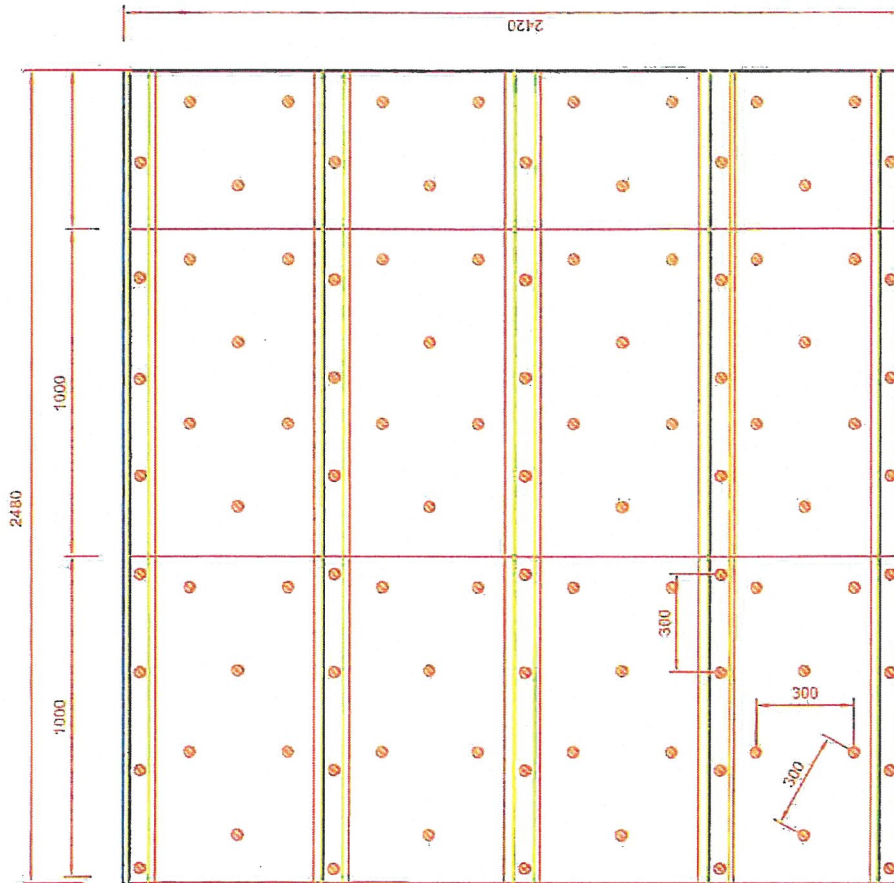
Date: 2017/20/04

Subject: A-30 Bulkhead SeaRox SL 620/ SeaRox SL 620

ROCKWOOL®
TECHNICAL INSULATION



ROCKWOOL®
TECHNICAL INSULATION



Bulkhead

All measurements in mm

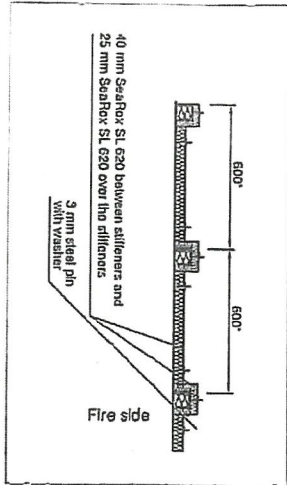
Subject: A30 Bulkhead, SeaRox SL 620 - 40/25 mm Date: 2016/12/21

Dwg No.: 522 Scale: 1:20 Rev.: Designer: DG

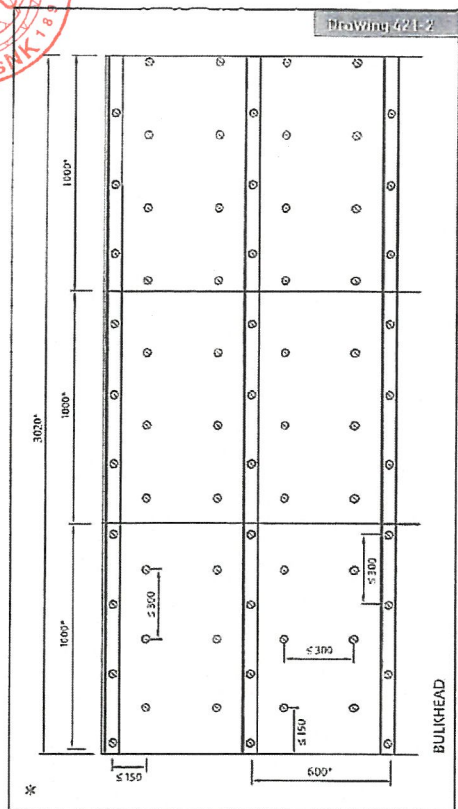
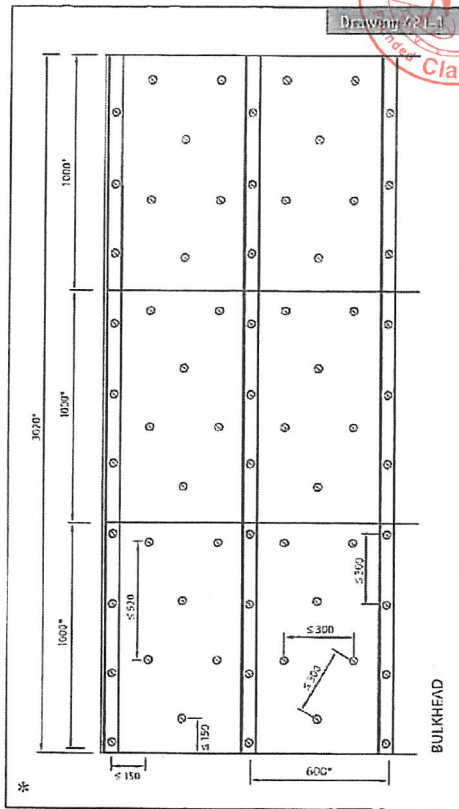


40 mm SeaRox SL 620 between stiffeners and 25 mm SeaRox SL 620 over the stiffeners

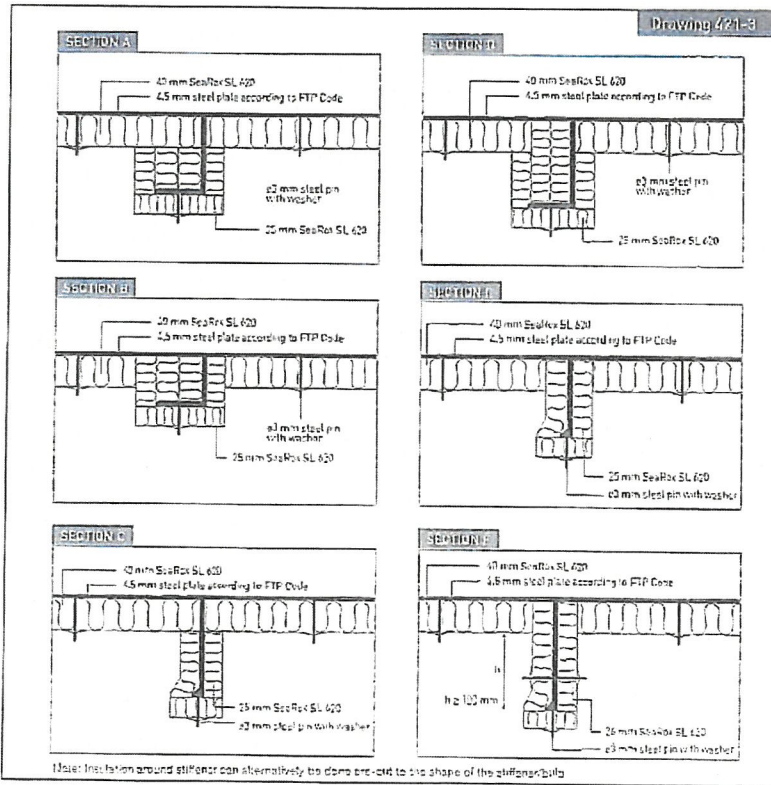
8mm steel pin with 30mm washer



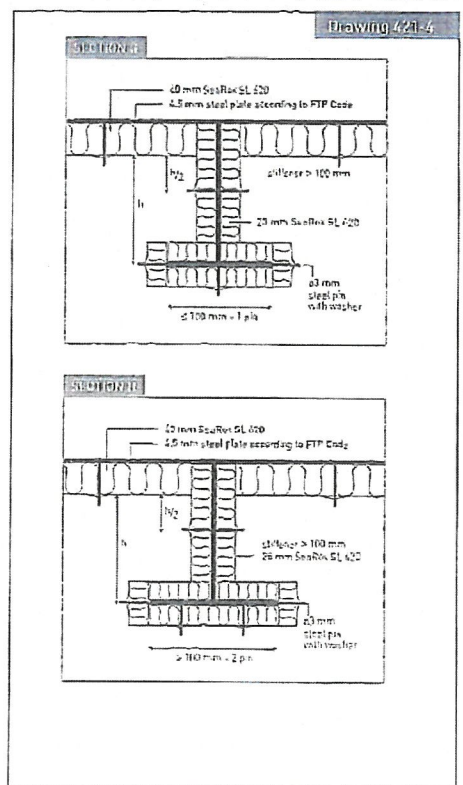
Utsunomiya Institute of Science and Security Technology
File No. PHA10906C



* Dimensions may vary depending on structural design and size of insulation slab.



Note: Insulation around stiffener can alternatively be done end-to-end to the shape of the stiffeners/bulbs



All measurements in mm

Date: 2017/02/09

Subject: A-30 Bulkhead SeaRox SL 620/ SeaRox SL 620

ROCKWOOL®

Assessment Report Nos.: