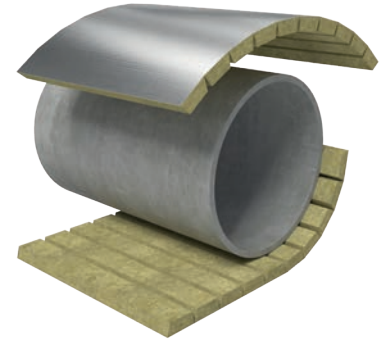


ProRox® PSM 971 ALU^{UK}

ProRox PSM 971 ALU^{UK} consists of rigid slabs with factory machined grooves on the inside face to specifically suit large pipe and vessel diameters. The distance between the grooves is calculated to ensure that ProRox PSM 971 ALU^{UK} closely fits the pipe or vessel with all grooves tightly butted together. ProRox PSM 971 ALU^{UK} is designed for thermal and acoustic insulation of large diameter pipes, ducts, chimneys and small vessels.



Product properties in accordance with EN 14303:2009+A1:2013



	Performance								Norms
Thermal conductivity*	T_m (°C)	50	100	150	200	250	300	350	EN ISO 8497
	λ (W/mK)	0.041	0.046	0.054	0.064	0.075	0.088	0.106	
Maximum Service Temperature*	700 °C								EN 14706
Reaction to fire*	Euroclass A1								EN 13501-1
Nominal density	140 kg/m ³								EN 1602
Water Absorption	< 1 kg/m ² < 20 kg/m ³								EN 1609 BP 172
Water vapour diffusion resistance	$S_d > 200$ m								EN 12086
Air Flow Resistivity*	> 60 kPa.s/m ²								EN 29053
Designation code*	MW EN 14303-T9-ST(+)-700-WS1-MV2								EN 14303

*: performances declared on the basis of test results from slabs in equal density

Compliance to standards

ProRox PSM 971 ALU^{UK} conforms to EN 14303:2009+A1:2013. Thermal insulation products for building equipment and industrial installations. Factory made mineral wool products (MW). Specification and can be used to satisfy BS 5422: "Method for specifying thermal insulating materials for pipes, tanks, vessels, ductwork and equipment operating within the temperature range -40°C to +700°C". They also comply with BP Engineering Standard 172 with regards to water repellency at higher temperatures.

As ROCKWOOL has no control over insulation design and workmanship, accessory materials or applications conditions, ROCKWOOL does not warranty the performance or result of any installation containing ROCKWOOL products. ROCKWOOL's overall liability and the remedies available are limited by the general terms and conditions of sale. This warranty in lieu of all other warranties and conditions expressed or implied, including the warranties of merchantability and fitness for a particular purpose. ROCKWOOL Technical Insulation reserves the right to make necessary product changes at any time. Technical specifications are thus stated subject to change.